



REGISTER TO VOTE
and
VOTE EARLY

★ ★ Text **“register”** to 48683 (IVOTE) ★ ★
to fill out a voter registration form online



Voter Registration Deadline: Oct 5
Early Voting Dates: Oct 13-30
Vote-by-Mail Application Due: Oct 23
Election Day: Tuesday, Nov 3

The 2020 election: a guide to voting

By Steven Weintraub, NSCNA director

So if you haven’t noticed, election season is upon us, with election day November 3. With so much misinformation circulating about voting this year, we want to give you accurate information on voting in 2020.

Registration

Unfortunately, it is too late to register to vote. But that doesn’t mean you shouldn’t check your registration. Go to the website <https://www.votetravis.com>. At the bottom of the form is a place to verify your voter registration status. Check the name, address and precinct. If the information is not correct, call the Travis County Clerk’s office at 512-854-9188.

In-person voting

■ **General info:** Travis County no longer has designated precinct voting sites. What you think of as a local precinct voting location is really one of many countywide voting centers. Each is empowered to let you cast your local ballot, no matter where you are in the county. Anywhere you see the “Vote Here” sign, you can vote. Go to the website <https://countyclerk.traviscountytexas.gov/elections/wait-time-map.html> to check the wait times at polls in your area and pick one with a short wait time.

To vote, you will be required to bring a photo ID: a Texas driver’s license, a Texas election ID certificate, a Texas personal identification card, a Texas handgun license, a U.S. military ID with photograph, a U.S. citizenship certificate with photograph, or a U.S. passport. Because of pandemic renewal backlogs, these documents may be expired (but by no more than four years, if you are under 70). If you don’t have any of these IDs, bring either a government document

bearing your name and address, a current utility bill or bank statement, a birth certificate, or a government or payroll check.

Three years ago, the Texas Legislature voted to eliminate straight-party voting, which allows a voter to vote for every candidate from one party with a single ballot choice, beginning with this election. Its elimination was briefly blocked by one court, appealed by the State of Texas, stayed by another court and finally upheld by a panel of judges from the 5th U.S. Circuit Court of Appeals on September 29. So, the option for straight-party voting will not appear on the ballot on November 3. You will need to go through the whole ballot and vote each race separately. This change may lengthen voting time.

Another change that may lengthen voting time is that this is the first major election with the new voting machines introduced last November. Familiarize yourself with them at https://youtu.be/XgOXm7a_GdQ.

■ **Early voting:** Early voting starts on Tuesday, October 13, and continues through Friday, October 30. Travis County has 37 early-voting centers, five of which are designated megacenters. The closest voting center for North Shoal Creek — the Ben Hur Shrine Center at 7811 Rockwood — is a megacenter. Other early-voting centers within a brief drive of North Shoal Creek are at the Arbor Walk by Home Depot (10515 N. Mopac), the Renaissance Austin at the Arboretum (9721 Arboretum Blvd.), Northwest Recreation Center (2913 Northland Drive) and Disability Rights Texas (2222 W. Braker Lane).

See 2020 ELECTION, page 2

Neighborhood News October 2020

A quarterly newsletter of the North Shoal Creek Neighborhood Association (NSCNA)

Editor: Sharon Justice

Contributors: Tanner Blair, Amy Culbertson, Donna Eagar, Pamela Ferguson, Barbara Gaston, Tina Huckabee, Kenneth Webb, and Steven Weintraub.

Color edition of newsletter available at www.nscna.org.

NSCNA 2020 officers and board:

President: Vacant
president@nscna.org
Vice president: Vacant
vp@nscna.org
Secretary: Barbara Gaston
secretary@nscna.org
Treasurer: Iain Cox
treasurer@nscna.org
Directors: Anna Hobbs
Sharon Justice
Jon Menegay
Steven Weintraub
Kevin Wier
Mary Jane Wier
directors@nscna.org

Committees:

Beautification: beautification@nscna.org
Bylaws: bylaws@nscna.org
Development: development@nscna.org
Garden: garden@nscna.org
Media: media@nscna.org
Membership: membership@nscna.org
Safety: safety@nscna.org
Social: social@nscna.org
Traffic: traffic@nscna.org
Join: www.nscna.org/join
Email List: www.nscna.org/elist
Calendar: www.nscna.org/calendar

To submit an article, email it to newsletter@nscna.org.
All articles subject to editing.

NSCNA
www.nscna.org
P.O. Box 66443
Austin, TX 78766-0443

Find us also at



2020 ELECTION, from pg. 1

Voting centers are open 7 a.m. to 7 p.m. Monday-Saturday and noon to 6 p.m. Sundays. As a megacenter, Ben Hur will be open until 9 p.m. October 28, 29 and 30. For smaller early-voting crowds, vote toward the end of the first week or the start of the second week.

■ **Election day:** On November 3, all polling places are open 7 a.m. to 7 p.m. Polling places are not finalized yet, but for North Shoal Creek they're likely to be Ben Hur and the North Village Library, 2505 Steck Ave. If you are in line by 7 p.m., you will be allowed to vote. Expect long and slow lines.

■ **Coronavirus precautions:** Polling place precautions will include social distancing; clear barriers between poll workers and voters; finger coverings and "popsicle" sticks for touchscreen signatures and voting; and availability of hand sanitizer. Personal protective equipment will be provided for polling place workers. Voters must wear masks and follow social distancing guidelines.

Absentee voting

■ **Applying:** If you are over 65, disabled or out of the county for the whole voting period, you can vote by mail. "Disabled" is defined as a "physical condition that prevents the voter from appearing at the polling place on election day without a likelihood of needing physical assistance or injury to the voter's health" (Texas Election code 82.002). State courts have ruled this is a self-determined definition. Voting officials have no legal authority to require voters to substantiate their disability at the time the application is submitted.

To apply to vote by mail, download the form at <https://webservices.sos.state.tx.us/forms/5-15f.pdf> and mail it to the Travis County Clerk Elections Division, P.O. Box 149325, Austin, Texas 78714-9325. Application deadline is October 23, but due to delays in mail and processing, October 13 is probably the last practicable day to apply.

The county began mailing early ballots at the end of September. To check your absentee ballot status, go to <http://www.votetravis.com>. At the bottom of the page, fill out your name and birth date and click "BBM Status."

If you have not received your ballot by October 7, call the Travis County Clerk's office, 512-854-9188.

■ **Returning your mail-in ballot:** You can mail in your ballot. It must be postmarked by election day and received by November 4 to be counted. Mail it in as early as possible. Recent U.S. Postal Service changes have slowed down mail service.

You can also return your mail-in ballot by hand. Originally, four locations were set up in Travis County to accept mail in ballots delivered by hand. However, on October 1 Governor Abbott issued a proclamation directing that mail-in ballots be delivered to a single location. Expect lawsuits to be filed against the proclamation. To see where to deliver a mail-in ballot, **please check the Travis County Clerk's website:** <https://countyclerk.traviscountytexas.gov/elections/ballot-by-mail.html>.

You must deliver your own ballot; you cannot deliver one for anyone else. You must present one of the forms of ID mentioned in the "In-Person Voting" section on page 1. Deliver it only to the site authorized to accept mail-in ballots; do not deposit yours into an unattended receptacle or bring it to a voting center.

If you have requested and received a mail-in ballot and decide to vote in person instead, you must bring your blank mail-in ballot to the voting center and surrender it to the elections judge before being allowed to vote. If you have requested but not received your ballot, you will be allowed to vote provisionally.

Election results

Our 24-hour news cycle and access to instant information have created an expectation that we will have the results election night or early the next day. This is not realistic. In most presidential elections, the result was not known until much later; in 2000, we did not know the winner for almost a month. The real deadline for results is December 14, when the electoral vote is cast.

The winner is determined when each state's secretary of state certifies the election in his or her state after all ballots are counted, including early-voting ballots, election day ballots and mailed-in ballots. Absentee ballots are notoriously slow to count, and the large number expected this year may take more than a week to count. The candidate leading on election night might not be the eventual winner in each state.

Are masks required at polling places?

On July 2 Governor Abbott issued an executive order establishing a statewide face covering requirement in counties with 20 or more Covid-19 cases. However, the order provided for several exceptions, one of which excludes "any person who is voting, assisting a voter, serving as a poll watcher, or actively administering an election" from being required to wear a mask. It then says "wearing a face covering is strongly encouraged." **Please protect yourself and others by wearing a mask when voting in person.**

Google Fiber internet coming to North Shoal Creek

By Amy Culbertson

Google Fiber is coming to North Shoal Creek, bringing top-speed fiber-optic internet but no TV service.

Street construction to install the lines could begin as early as November, with a goal of offering service by the end of the year, according to Daniel Lucio, government and community affairs manager for Google Fiber in Austin. Lucio cautioned this timeline is “dependent on many factors.” Some Austin neighborhoods have reported substantial delays in being connected, after ongoing construction issues.

The company promises that no yards or private property will be affected in the construction to install underground fiber-optic lines, which is supposed to take place only in the public right-of-way. Expect some noise and disruption, as crews may work from 7 a.m. to 7 p.m., including weekends, and street parking will be blocked off.

Lucio said that residents will be notified of impending construction via Google Fiber doorhangers and that no-parking signs will be placed at least 48 hours in advance to give residents time to move their cars. Cars whose owners cannot be located by going door to door could be towed, he

noted, but he promised that the owner will not be charged for the tow and that vehicles will typically be returned to the site where they were parked. The company has a dedicated 24/7 line for complaints and questions: 877-454-6959. Lucio said the company would work with the North Shoal Creek Neighborhood Association to handle any construction issues.

After construction and installation are completed, residents will be able to sign up for Google Fiber service at <https://fiber.google.com/cities/austin>. On offer will be gigabit-speed (1000-mbps) internet for \$70 a month, with no annual contracts, installation fees or data caps. Wi-Fi is included, with no purchase of additional equipment required.

The disappointing news for those seeking an alternative to existing cable providers: Google Fiber is no longer offering TV service due to rising costs and the popularity of streaming and subscription TV services. The Google Fiber sales team has been offering advice to prospective customers on how to access streaming and other TV services, Lucio said.



Peggy Little

512.970.7349

peggy@atxagent.com

www.atxagent.com

Allandale / North Shoal Creek specialist since 1992



8604 Stillwood Lane • Listed at \$580,000

“Peggy Little was the perfect realtor to sell my mom’s home in Shoal Creek. She knows the neighborhood inside and out! She is by far a perfectionist and was there for us throughout the whole process walking us through step by step! Peggy is the BEST realtor in Austin! She will sell your home and you will have fun doing it!”

Kelly Hobbs

Kitchen United Mix offers takeout smorgasbord

by Amy Culbertson



From ramen to hot dogs to Korean fried chicken, you can order from 15 different menus for takeout and delivery at Kitchen United Mix, a new concept called a ghost kitchen on Burnet Road. Photo courtesy of Kitchen United Mix

From burgers to bao, from tacos to tandoori: Kitchen United Mix, the Wooten “ghost kitchen” facility at 8023 Burnet Road, is shaping up as a unique North Austin dining resource for pandemic times and beyond.

On one central website, diners can browse 15 different menus, order items from as many of the vendors as they like and have all the orders packaged together for pickup or delivery. All the food is cooked on-site in one of the facility’s 16 restaurant kitchens (one kitchen is currently unfilled).

Local restaurants make up the majority of the operations:

■ **Eldorado Taco y Torta Co.:** A spinoff of Eldorado Café, with a broad roster of tacos, meaty sandwiches and Tex-Mex bowls.

■ **Teji’s Indian Kitchen:** The latest location of the Round Rock original known for its spice-forward curries

and vindaloos. Teji’s has installed its own tandoor oven at Kitchen United.

■ **Bao’d Up:** From the Mueller mothership specializing in Chinese stuffed steamed buns and noodle bowls.

■ **Seoulju Korean Kitchen:** From the North Lamar purveyor of crispy Korean twice-fried chicken and Korean street food.

■ **Bombay Walla:** A takeout-only kitchen whose menu includes not only familiar Indian favorites but also specialties like Goan shrimp curry, as well as vegan Indian dishes.

■ **Ramen512:** A former pop-up that’s found a home at Kitchen United for its various styles of the hearty Japanese broth-based noodle soups.

■ **Hawt Chicken:** Another takeout-only operation, turning out Nashville-style hot fried chicken sandwiches.

Yost Auto I
5416 N. Lamar
(512) 374-9678

Yost Auto II
6517 N. Lamar
(512) 452-9678

The holidays are quickly approaching which means two things-Aunt Edna's fruit cake and holiday traveling. Don't hop on the highway without a proper check-up and leave your family stranded on the side of the road halfway to Wisconsin!

Stop by Yost Auto for a full trip check at a special rate of \$75 if you mention this flyer! While we're at it, we can throw in a non-synthetic oil change for only \$25! Call either location or visit us at www.yostauto.com to set your appointment today.

YOSTAUTO.COM

Quality
when nothing less will do

Service
because your business is valued

Deadlines
what you need when you need it

Solutions
for your project and your budget

Republic Print & Mail proudly supports Central Texas communities through a variety of “give back” programs that benefit children, education, mental health and fine arts.

8905 McCann Drive Austin, Texas 78757
512.459.4139 Fax: 512.459.4156 www.republicprint.com

■ **Sustain Burger:** With burgers both beefy and plant-based, it's a sister operation to Hawt Chicken.

■ **Señor Churro:** The fried-dough pastries of Hispanic origin headline a slate of desserts.

Chain offerings include **Hawaiian Bros**, a regional chain out of Kansas City, with grilled chicken and roasted pig; **P.F. Chang's to Go**, from the suburban-Asian chain; and a quartet of takeouts from California-based Awesome Brands: **Dog Haus** (baroque Cali-style hot dogs and burgers), **Plant B** (veggie burgers and dogs), **Bad Mutha Clucka** (chicken sandwiches) and **Bad-Ass Breakfast Burritos**.

Many of the vendors offer lunch specials and family meals; most offer vegetarian options, limited dessert menus and non-alcoholic drinks.

Ordering is through the website, <https://order.kitchenunited.com/austin>, which consolidates all your choices into one order, even if you've ordered from several vendors. Payment is contactless. You can pick up your order from the tent out front or opt for delivery for an extra fee. Delivery orders also can be placed individually through most of the restaurants' dedicated websites or various delivery apps. And the restaurants have kiosks to take walk-in orders. The Kitchen United Mix facility is open from 11 a.m. to 10 p.m. daily, but each vendor sets its own hours, and some offer delivery after 10.

Kitchen United Mix, 8023 Burnet Road across from Austin Subaru, <https://order.kitchenunited.com/austin>.

Newly open

■ The Vanilla Orchid catering company in Crestview has launched a takeout-and-delivery concept specializing in chicken salad. The **Chicken Salad Shoppe** showcases six distinctly different chicken salads, headlined by its signature BLAT — bacon-studded chicken salad in a poblano-pecan pesto mayo, with lettuce, avocado and tomato. Vegetarian or vegan chickpea salads can be had as well, and all the versions come as salads or as sandwiches with various bread options. Rounding out the menu are sides and house-made “monster” sandwich cookies; drink options include freshly made Madagascar vanilla lemonade.

Order online for pickup or delivery (\$3.50 within the 78757 area).

The Chicken Salad Shoppe, 7433 Burnet Road at Richcreek; 512-790-7790, <https://www.chickensaladshoppe.com/>. 10a-8p Tue-Sat.

■ The new **Backspace Anderson Lane** is serving up Neapolitan pizzas, contemporary northern Italian fare and cocktails in Crestview for both dining in and carrying out.

This is the first Backspace outside the downtown original for chef Shawn Cirkiel, who brought his wood-fired pizza oven to East Sixth Street in 2008 to complement his upscale Parkside and has been making best-pizza lists since. The new Backspace offers a full roster of antipasti, inventive salads, panini, pastas, sides, desserts and specials.

Online ordering is encouraged for curbside carryout, which includes beer and cocktails to go.

Backspace Anderson Lane, 1745 W. Anderson Lane at Rutgers, Crestview; 512-474-9899, www.backspacepizza.com. 4-9p daily. Delivery through GrubHub, Favor, Uber Eats.

■ **The Bon Aire**, a neighborhood sports bar and gathering spot for burgers, beer and cocktails, is open in the northern-most section of Crossroads Center at Burnet and U.S. 183.

Modeled on a classic St. Louis pub, the Bon Aire's claim to fame is the strikingly affordable prices it charges for its made-in-house bar-food items: A half-pound house-blend beef burger is a doubletake-inducing \$3.99. There are also kebabs, hot wings, hot brats and peel-and-eat shrimp (39 cents each).

There's an expansive outdoor dining area, and Covid-19 precautions include temperature checks, masks and hand sanitizing for entry; one-use servingware; and required masks for employees. Owners Fritz Beer and Scott Hillen note there's lots of space inside for distancing. No carryout, though.

The Bon Aire, 9070 Research Blvd., No. 101; 512-917-5496; www.bonaireatx.com. 3-10p Mon-Fri, 2-11p Sat-Sun.

See **KITCHEN UNITED**, page 10

rachel nation
Real Estate Broker

rachel@rachelnation.com
nationholdings.com + hancockcottages.com
512.514.5458

Proudly calling Allandale home since 1996.

Update on Burnet Road Corridor improvements

By Tanner Blair, North Shoal Creek Contact Team

Burnet Road north of 183 is the heart of the North Burnet Gateway District, which includes destinations such as the Domain, the new major-league soccer stadium targeted to open in 2021, the IBM Broadmoor Campus and the J.J. Pickle Research Campus.

This area — bounded by Walnut Creek on the north, Metric Boulevard on the east, U.S. 183 on the south and southwest, Braker Lane on the northwest and MoPac on the west — is increasingly a major center for employment, entertainment and housing. To enhance the quality of life for those who live, work and visit in this area, the city is proposing several improvements along the Burnet corridor.

To start, the city intends to use funds from the 2016 mobility bond to improve bus stops and create shared-use bike and pedestrian paths along Burnet north of U.S. 183 all the way up to MoPac. These will connect North Shoal Creek and other neighborhoods south of 183 to the many amenities and opportunities the North Burnet Gateway District provides.

These funds will also be used to repave the road, add new stormwater improvements and upgrade traffic signals at several key intersections along Burnet: Waterford Centre

Boulevard (includes turn lane improvements), Longhorn Boulevard, Rutland Drive, Braker Lane, Kramer Lane, Esperanza Crossing (includes turn lane improvements), Palm Way (includes turn lane improvements) and Gault Lane.

If additional funding becomes available, the city is also considering widening Burnet to six lanes; separating the bicycle and pedestrian pathways; investing more in landscaping, lighting and trees; and adding raised medians.

The city received almost 300 comments during its open-comment period on the Burnet enhancements. While many of the proposed improvements received broad support, several key themes emerged:

- Among the funded improvements, the shared-use paths separated from the road by a landscape buffer are generally supported. The unfunded proposal to separate the cycling and pedestrian pathways raised some concern that this might push the bike path dangerously close to Burnet.
- In both funded and unfunded improvements, the city was urged to make intersections safe for cyclists.
- Widening Burnet to six lanes is not preferred. If funding for more lanes becomes available, residents would prefer

NORTH SHOAL CREEK REAL ESTATE UPDATE

Smaller Homes

1051 – 1398 square feet

- # homes sold: 9
- Avg. # days on the market: 4
- Avg. square footage: 1252
- Avg. sold price per sq. ft.: \$377.44
- Avg. sold price: \$420,810

Larger Homes

1543 – 1833 square feet

- # homes sold: 4
- Avg. # days on the market: 6
- Avg. square footage: 1720
- Avg. sold price per sq. ft.: \$310.99
- Avg. sold price: \$529,876

Statistics from 5/16/20 until 9/18/20 per Austin MLS

We saw quite a few more sales this past 90 days. Homes sold much faster and the price per square foot increased since the summer issue of our newsletter



Celebrating 30 years of selling North Shoal Creek area homes and decorating your yards with the American Flag

Sandy Perkins

Your Neighbor and Your Realtor

512-797-7375

sandy.perkins@yahoo.com



dedicated transit lanes over additional single-passenger lanes.

Work on the funded series of improvements is scheduled to begin at Burnet Road and Braker Lane later this year. Design for the rest of the funded improvements should be finished next

year, with construction starting in 2022.

All combined, these improvements are sure to make Burnet Road a more enjoyable place to visit and more accessible to all. Find more about the project at <http://austintexas.gov/BurnetENV>.

Why North Shoal Creek should care about Burnet Road north of 183

By Sharon Justice, newsletter editor


Our neighbor to the north, the **North Burnet Gateway District**, is 2,300 acres of rapidly developing real estate. It has been called “Austin’s Second Downtown” and “Austin Uptown,” and it is starting to live up to those names.

While the Domain is its largest development, the 66-acre Broadmoor development — the Domain’s neighbor on the east side of Burnet Road — when built out is expected to hold 16,000 employees, 2,996 apartment units, 400,000 square feet of retail and nine acres of green space. South of Braker Lane, the Austin FC Stadium being built at McKalla Place, along with its new rail stop, will anchor more development.

The **Burnet Road Corridor Improvement** program aims to re-envision Burnet to handle the transportation needs generated by this growth. The goal is to siphon people out of their cars and into “alternative transportation” — biking, walking, buses or rail. The quality of life we enjoy in North Shoal Creek will be affected by the success of this plan, and I encourage residents to get involved and stay up to date on its implementation.

OFFERING IN PERSON OR VIRTUAL LEARNING

Redeemer SCHOOL 15 MONTHS THROUGH 8TH GRADE



NOW ENROLLING
redeemerschool.net
512.362.6318

LOVE JESUS. LOVE LEARNING. LOVE OTHERS.



AUSTIN TELCO

FEDERAL CREDIT UNION

512-302-5555
www.atfcu.org

Your Community Credit Union since 1941

Free Checking
300+ Free ATMs
24 Metro Locations
Mobile App
Mobile Deposit
Great Rates

Visit your local branch today:
8929 Shoal Creek Blvd



Federally Insured by NCUA

Apartment projects to rise on Burnet south of 183

By Sharon Justice, newsletter editor

The coronavirus isn't slowing construction much along Burnet Road, if at all. According to a recent *Austin Business Journal* article, developments comprising 1,394 apartments are proposed along Burnet. Most of these are to the north of U.S. 183, but three major projects are planned to the south, along with a smaller Project Transitions affordable-housing complex.

■ The largest complex is in Crestview, at **7113 Burnet Road** on the site of the Local Post Pub. This 4.4-acre site will become a 360-unit apartment complex, assuming that the Austin City Council — which approved the project on first reading at its August 27 meeting — approves the project on second and third reading. The council recently postponed the next vote on the project to its November 12 meeting. The proposal calls for a six- or seven-story apartment complex, with a maximum height of 90 feet. Of the proposed 360 apartment units, 10 percent are earmarked as “affordable” for those making 60 percent of the area’s median family income.

■ A few blocks south, at **6801 Burnet Road** on the site of the old Frisco Shop restaurant in Brentwood, Oden Hughes LLC has proposed a five-story mixed-use building with 315,000 square feet of residential and 4,000 square feet of office space. The site plan, which was filed with the city on

June 11, 2020, can be found by searching the permit number (2020-054168 SP) in Austin’s Build + Connect database (<https://www.austintexas.gov/page/austin-build-connect-abc>).

■ In North Shoal Creek, Sackman Enterprises’ site plan application for its 286-unit apartment complex at **8528 Burnet Road** south of Rockwood Lane is scheduled to be approved by city staff before October 10. The project was originally approved by the Austin City Council in September 2016 to include 300 units; that number was decreased in 2019 to 286, 15 percent of which will be earmarked “affordable” at 80 percent of median family income.

■ Finally, construction should begin in spring 2021 on the **Burnet Place Apartments**, a 61-unit complex at **8007 Burnet Road** in Wooten (the site of the old Zoe’s Safe Place). Intended to supply affordable housing along with supportive care for persons living with AIDS or HIV, the project is being built by Project Transitions, an organization dedicated to serving people with HIV and AIDS by providing housing, comprehensive support services, recuperative care and hospice in compassionate and caring environments. For more information on this project, go to <https://www.projecttransitions.org/housing-is-vital>.

SHOAL CREEK DENTAL CARE

And all at once, summer collapsed into fall.
- Oscar Wilde

The holiday season is around the corner! A season to spend time with friends and family. A season of joy and giving!

Shoal Creek Dental offers a variety of services to give you and your smile the very best.

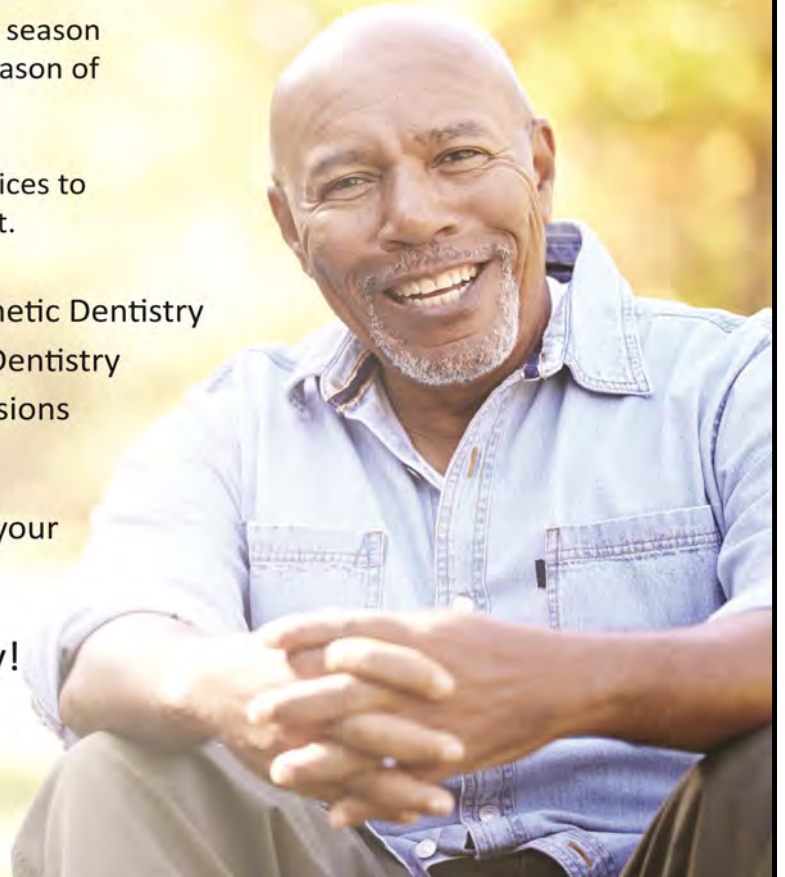
Same Day Crowns 🌿	Implants & Cosmetic Dentistry
Cleaning & X-Rays	Pain Free Laser Dentistry
Orthodontic Services	Gag Free Impressions

Give your teeth a good cleaning before your insurance expires and 2020 ends!

Book your Appointment Today!



SHOAL CREEK DENTAL CARE
8015 Shoal Creek Blvd., Suite 120
512.453.8181
www.shoalcreekdental.com



Pedaling words on both sides of the pond

By Pamela Ellen Ferguson, Kerrybrook



Pamela Ellen Ferguson, a longtime resident of Kerrybrook Lane, writes a column of observations about North Shoal Creek and the larger world for each issue. A dual-national British and American (Texan father, Cornish mother), she is the author of 10 books published on both sides of the pond. Pam welcomes comments via email at pamelacudot@gmail.com. Her website is www.pamelaferguson.net.

Pedaling Around With Pam

“Our finances are in rude health,” Treasurer Iain Cox announced at our last North Shoal Creek Neighborhood Association meeting. There was a surprised silence.

Then NSCNA President Kevin Wier spoke up: “Iain, only two people in this room know what you mean by 'rude health': You and Pam!” Raucous laughter. Iain, who emigrated to the U.S. from Oxford a decade ago, explained that in the U.K., the expression means *great* health — as opposed to the American sense of “rude” as in “a rude awakening.”

Iain followed up in an email noting a few other contrasting idioms: *zebra crossing* (rhymes with “Debra” in the U.K.) for *crosswalk*, for example. And to *table* something here means to postpone consideration, while in the U.K. it means to deal with the issue straightaway (postponing an item in the U.K. would be to *shelve* it).

Those of us who have spent chunks of our lives crisscrossing the pond often share stories like these. We’ve all known times when

something we say baffles the people we’re speaking to — or means the opposite of what folks think we mean. I thought of this when neighbor Karyn Buchanan posted an item on Nextdoor about a porch thief she described as having a *plumber’s crack*. In the U.K., we would call it a *builder’s bum*.

On a more mundane level (listing the U.S. idiom before its U.K. counterpart), it’s *trash/rubbish*, *elevator/lift*, *shopping cart/trolley*, *large truck/lorry*, *garbageman/binman*, *dumpster/wheelie bin*, *crossing guard/lollipop woman/man*.

We have become familiar with *curbside pick-up* during these months of navigating the virus. My friends in Dublin, though, use the term *call and collect*. In the U.S., *quite good* means *very good*; in the U.K., it means only *fairly good*. In the U.S., to respond “*I don’t care*” when given a choice is a mild way of saying “*I don’t mind one way or the other.*” But in the U.K., it’s quite harsh and can be a dismissive way of saying “*I don’t give a damn.*”

In the U.S., we get our *panties in a wad*; in the U.K., it’s *knickers in a twist*. *Pissed* in the U.S. means angry; in the U.K., *pissed* means sozzled — drunk, that is. Oh, and the word *fanny*? Watch out! *Fanny* is an inoffensive word for *butt* in the U.S., but in the U.K. it’s slang for *vagina*. Whoops! And the best of all — *rubber*? In the U.K. the word *rubber* means an eraser; the U.K. slang for a condom is a *French letter*. (In France, funnily enough, it’s an *English letter*, or *lettre Anglais*.)

How often have I found myself stepping in to direct some hapless Brit struggling in an American restaurant to find the *loo*, or the *cloakroom* — or to help an American tourist on the other side of the pond find a *restroom*?

In an English pub, a *ploughman’s lunch* — a selection of fine English cheeses like cheddar and stilton, along with bread, chutney or pickle, onion and perhaps salad — can baffle Americans as much as a *chicken-fried steak* baffles a Brit in Texas. And, as Iain Cox added: “Don’t get me started on *biscuits and gravy*”: It’s U.S. *biscuit*/U.K. *scone* (more commonly pronounced to rhyme with “gone”). U.S. *cookie*/U.K. *biscuit*. U.S. *french fries*/U.K. *chips*. U.S. *chips*/U.K. *crisps*.

Garden guru

To end on a local note: Our neighborhood garden guru Tina Huckabee on Stillwood Lane writes an entertaining and informative blog highlighting her abundant garden of native Texan plants. Her blog, “My Gardener Says” (www.mygardenersays.com), was featured — along with her garden photography — in a cover article on local garden bloggers in the 360 section of the *Austin American-Statesman* in July.



Among Tina’s most ardent fans and followers? Garden lovers in the U.K.!

Tina Huckabee illustrates her blog with photos of her garden’s inhabitants and visitors, such as this crab spider exploring a purple coneflower. Photo courtesy of Tina Huckabee



STEVE DEAN
(YOUR NEIGHBORHOOD EXPERT)

READY TO BUY OR SELL IN 78757?

Contact me today.
512-431-5987
SteveDean@realtvaustin.com



Updates

■ The many fans of **Enchiladas y Mas**, the family-owned Tex-Mex institution on Anderson Lane in Crestview, have been given a reprieve. Having decided to retire, the owners closed the restaurant last spring after a 26-year run. Now Eva and Carmen Hernandez, daughters of late co-founder Roe Hernandez who had worked there as general managers, have bought and reopened Enchiladas y Mas.

The menu remains pretty much as before, with both dining in and carryout. The restaurant's popular frozen margaritas are available to go, too. Delivery is available through Favor, Postmates and DoorDash, but carryout must be ordered by phone (the restaurant has no website).

Covid-19 restrictions include limiting dine-in tables to 12 and seatings to 90 minutes; masks are required except at tables. If you're waiting for a table (reservations are not taken) or carryout, you can't do it inside: Patrons check in, leave their contact number and then are asked to wait outside or in their cars.

Enchiladas y Mas, 1911 W. Anderson Lane; 512-467-7100. 11a-9p Tue-Sat, 11a-3p Sun; closed Mon.

■ **AustiNuts**, popular purveyor of roasted nuts, confections, dried fruits, snack mixes, popcorn, condiments, seasoning blends, gifts and gift baskets, has closed its Anderson Lane brick-and-mortar to concentrate on its online-order business.

Customers can still order their favorite items at www.austinuts.com or 512-323-6887. With the store closing, AustiNuts has lowered some of its prices. There's a shipping fee on orders of less than \$69, but buyers can also arrange to pick up their items at PakMail, 2900 Anderson Lane at Rockwood, Suite C220.

AustiNuts, 512-323-6887, www.austinuts.com. PakMail pickup 10a-6p Mon-Fri, 11a-2p Sat.

In the works

Thom's Market, the old-school new-style neighborhood market with stores on Barton Springs Road, Riverside Drive and Spyglass Drive, is coming to Brentwood.

Replacing a 7-Eleven at 5901 Burnet Road just north of Koenig, the Austin-centric market will offer a wine selection full of interesting bottles and a Texas-heavy craft-beer roster. Locally made products are a focus.

Owner Bill Thom said he wants his markets to be a place for "real groceries in a 7-Eleven-size store — a full-blown neighborhood grocery store." So he stocks artisanal food items and gifts as well as household staples, and he looks for organic and natural products.

Opening depends on permitting, but December is the goal. Initial hours will be 8 a.m. to 10 p.m. Mondays-Saturdays, 9 a.m. to 9 p.m. Sundays.

Top Tier pastry pop-up goes monthly

Pastry chef Tishauna Barnes has expanded her Saturday **Top Tier Bakery** pop-ups on Spicewood Springs Road to a weekly schedule. From 1 to 3 p.m. every Saturday, she's selling cookies (gingerbread cookies and gingersnaps, maple brown-sugar, oatmeal, chocolate-chip, white-chocolate-chip and sugar cookies, \$15/dozen); cupcakes (chocolate, vanilla, pumpkin, cinnamon spice, \$30/dozen); and macarons (vanilla, apple cider).

Barnes requires reservations by phone for 15-minute time slots to make sure only one customer enters the studio at a time (masks required). You can place your order when you make the reservation or browse the selection at the studio. You can also order from her full bakery menu of cakes, cheesecakes, brownies, pies and cobblers, and she'll have your order ready for you.

With both pastry and culinary school training under her belt, Barnes has worked at several lauded area restaurants. Now she's focusing on her own bakery business and is searching for a spot to house her Top Tier Bakery, in north Austin if possible. Meanwhile, she's doing custom orders for delivery (call at least a day in advance; cakes start at \$30). She and her husband Sean, both U.S. Navy veterans, recently moved to North Shoal Creek.

Top Tier Bakery pop-up, 1-3p Saturdays, 3933 Spicewood Springs Road, Suite 200 in the Do Better Lifestyle Institute chiropractic complex; reserve a time slot at 512-745-9508. To order online for delivery: www.toptierbakeryatx.com.

Retail and services

■ **Glow Nails Beauty Bar & Lounge**, 2947 W. Anderson Lane, is a new 3,000-square-foot salon open daily for appointments and walk-ins; 512-206-2982, www.glownailsatx@gmail.com.

■ Closings in the Anderson Lane business district include **Body Business Fitness Club** and **Zip-N** convenience store.

Former restaurant critic and food editor Amy Culbertson writes about restaurant and retail news of interest to the neighborhood. Send information and tips on openings and closings to her at newsletter@nscna.org, with the subject line OPENINGS.

HAVE YOU SEEN THIS PIZZA?



LAST KNOWN LOCATION at ANDERSON & BURNET

WANTED for CRUSHING APPETITES & BRINGING FRIENDS TOGETHER

CALL *Conans*

512-459-3221

ABOUT NSCNA

The North Shoal Creek Neighborhood Association (NSCNA) serves the residents living in the area bounded by MoPac Expressway on the west, Research Boulevard on the north, Burnet Road on the east and Anderson Lane on the south. It is a Texas nonprofit corporation, and its purpose is to promote and protect the quality of life, safety, residential characteristics and property values of this neighborhood specifically and all neighborhoods generally.

Dues are \$15 per calendar year. Renters and property owners living in North Shoal Creek are eligible to join: Fill out the membership form on page 12, then mail it and your \$15 check to NSCNA / P.O. Box 66443 / Austin, TX 78766-0443. Or join online at www.nscna.org/join via PayPal. Or come to our next membership meeting and join there via cash or check.

The North Shoal Creek Neighborhood Association holds five membership meetings a year, open to the public, on the first Tuesday of January, March, May, September and November. Meetings are held from 6:30 to 8 p.m. in the Pillow Elementary School library, 3025 Crosscreek. Currently, meetings have been suspended until further notice due to coronavirus concerns.

The North Shoal Creek Neighborhood News is distributed four times a year. Newsletter ad prices:

- Business-card size, 3.5" wide by 2" high, \$30.
- Quarter-page, 3.5" wide by 4" high, \$60.
- Half-page: 7.5" wide by 5" high, \$115.
- 10% discount when three or more ads are purchased at the same time. To advertise, email newsletter@nscna.org.

Advocate for your neighborhood by joining our NSC Contact Team

By Kenneth Webb, North Shoal Creek Neighborhood Plan Contact Team chair

You can become a steward for our neighborhood plan by joining the North Shoal Creek Neighborhood Plan Contact Team.

In Austin, a neighborhood plan contact team is a group designated to advocate for a neighborhood plan that has been jointly adopted by the neighborhood and the city. The team's mission is to work with city staff toward the implementation of its recommendations, review and respond to proposed plan amendments, prioritize the plan's recommendations, serve as a community point of contact and work on behalf of other neighborhood stakeholders.

The North Shoal Creek Neighborhood Plan Contact Team was created by city officials in September 2018 after the adoption of the neighborhood plan.

The contact team is different from a neighborhood association. Neighborhood associations generally take on a wider range of neighborhood issues, while contact teams focus on implementing the neighborhood plan with the city, in such areas as zoning and property use and development.

In November 2020, the North Shoal Creek Neighborhood Contact Team is scheduled to elect officers — chair, vice chair and secretary — who will serve in 2021 and 2022.

Team membership is open to these individuals within the neighborhood planning area: property owners, residential renters, business owners and neighborhood organization members owning or renting property within the area.

The team's regular evening meetings before the pandemic were quarterly, on the first Thursday of February, May, August and November; during shutdowns meetings have been moved online on a more fluid schedule. Attendance at one meeting is required before becoming a voting member. **If you are interested in becoming a member or attending a meeting of the contact team, or if you'd like more information about the team, please send an email to nsccontactteam@gmail.com.**

michael, native
shortcut, \$30

i BIRDS BARBERSHOP
austin

Mobilepay available on Birds Booking app • birdsbarbershop.com

and Amore Always Petsitter
Certified Dog Trainer

Roberta Maleski
(512) 296-5196
amorepets94@gmail.com
www.amorealways.com

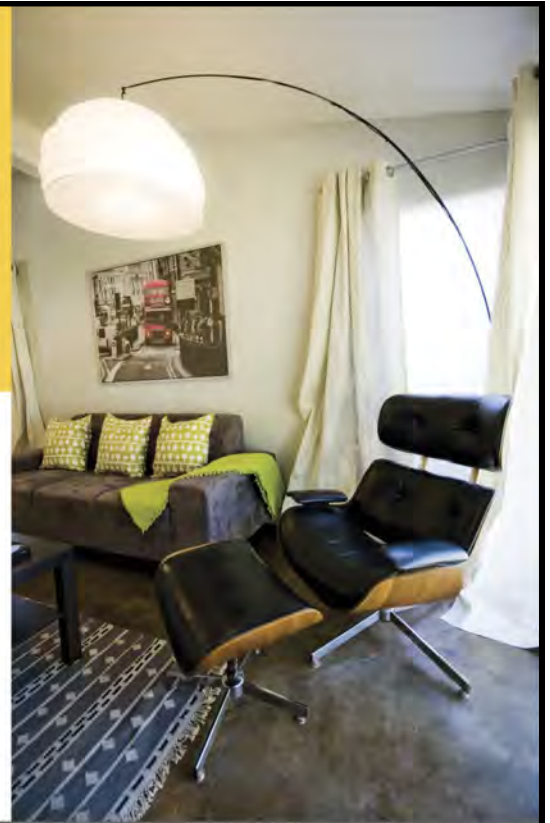
Lovin' Your Pet
Don't Fret

→ Hancock Guest Cottages ←

Hancock Ranch House • Petite Suite • Modern

Hello! We're your neighbors—our family first built in Allandale in the 1960's. Our homes are perfect for remodelers, insurance claims, & perching between buy & sell. Are you relocating? We are Realtors, too, Nation Holdings LLC.

Hancock Cottages LLC hancockcottages.com 512.514.5458



All bills paid furnished guest homes for families like you!



**NORTH SHOAL CREEK
NEIGHBORHOOD ASSOCIATION**

www.nscna.org

www.facebook.com/nscna

MEMBERSHIP FORM 2020

Names of all residents over 18: _____

Street address: _____ Austin, TX 78757

Telephone: (____) _____ Email: _____

Please circle your area/s of interest:

Beautification	Bylaws	Development	Election	Garden
Media	Membership	Nominating	Safety	Social
				Traffic

Please mail this form with a \$15 check payable to NSCNA to: NSCNA / P.O. Box 66443 / Austin, TX 78766 -0443. Or, join online via PayPal at www.nscna.org/join. Online cost is \$16, which includes a \$1 PayPal processing fee. Membership is for the calendar year, January through December 2020.